

# How American Politics Ensures Electoral Accountability in Congress<sup>1</sup>

Gary King<sup>2</sup>

Institute for Quantitative Social Science  
Harvard University

Center for American Political Studies, Harvard University, 11/29/2023

---

<sup>1</sup>Joint with Danny Ebanks & Jonathan N. Katz (thanks to Aleksandra Conevska)

<sup>2</sup>GaryKing.org

## The Plan

Model Validation: Out-of-sample tests

Prob(Incumbent Defeat): High, No Change

Intermediate Variables: Massive Change

How No Change Leads to Massive Change

Appendix

# Evaluating the Health of American Legislative Democracy

# Evaluating the Health of American Legislative Democracy

- Controversial Indicators of Democracy (important otherwise)

# Evaluating the Health of American Legislative Democracy

- Controversial Indicators of Democracy (important otherwise)
  - Ideological polarization:

# Evaluating the Health of American Legislative Democracy

- Controversial Indicators of Democracy (important otherwise)
  - Ideological polarization: Now: Too much!

# Evaluating the Health of American Legislative Democracy

- Controversial Indicators of Democracy (important otherwise)
  - Ideological polarization: Now: Too much! 1950s: Too little!

# Evaluating the Health of American Legislative Democracy

- Controversial Indicators of Democracy (important otherwise)
  - Ideological polarization: Now: Too much! 1950s: Too little!
  - Partisan alignment:



# Evaluating the Health of American Legislative Democracy

- Controversial Indicators of Democracy (important otherwise)
  - Ideological polarization: Now: Too much! 1950s: Too little!
  - Partisan alignment: Now: too much!

# Evaluating the Health of American Legislative Democracy

- Controversial Indicators of Democracy (important otherwise)
  - Ideological polarization: Now: Too much! 1950s: Too little!
  - Partisan alignment: Now: too much! 1980s: too little!

# Evaluating the Health of American Legislative Democracy

- Controversial Indicators of Democracy (important otherwise)
  - Ideological polarization: Now: Too much! 1950s: Too little!
  - Partisan alignment: Now: too much! 1980s: too little!
  - Incumbency advantage:

# Evaluating the Health of American Legislative Democracy

- Controversial Indicators of Democracy (important otherwise)
  - Ideological polarization: Now: Too much! 1950s: Too little!
  - Partisan alignment: Now: too much! 1980s: too little!
  - Incumbency advantage: 1980s: too much!

# Evaluating the Health of American Legislative Democracy

- Controversial Indicators of Democracy (important otherwise)
  - Ideological polarization: Now: Too much! 1950s: Too little!
  - Partisan alignment: Now: too much! 1980s: too little!
  - Incumbency advantage: 1980s: too much! Now: shh!

# Evaluating the Health of American Legislative Democracy

- Controversial Indicators of Democracy (important otherwise)
  - Ideological polarization: Now: Too much! 1950s: Too little!
  - Partisan alignment: Now: too much! 1980s: too little!
  - Incumbency advantage: 1980s: too much! Now: shh!
  - Vanishing marginals:

# Evaluating the Health of American Legislative Democracy

- Controversial Indicators of Democracy (important otherwise)
  - Ideological polarization: Now: Too much! 1950s: Too little!
  - Partisan alignment: Now: too much! 1980s: too little!
  - Incumbency advantage: 1980s: too much! Now: shh!
  - Vanishing marginals: 1970s: too much!

# Evaluating the Health of American Legislative Democracy

- Controversial Indicators of Democracy (important otherwise)
  - Ideological polarization: Now: Too much! 1950s: Too little!
  - Partisan alignment: Now: too much! 1980s: too little!
  - Incumbency advantage: 1980s: too much! Now: shh!
  - Vanishing marginals: 1970s: too much! 1980s: nope!



# Evaluating the Health of American Legislative Democracy

- Controversial Indicators of Democracy (important otherwise)
  - Ideological polarization: Now: Too much! 1950s: Too little!
  - Partisan alignment: Now: too much! 1980s: too little!
  - Incumbency advantage: 1980s: too much! Now: shh!
  - Vanishing marginals: 1970s: too much! 1980s: nope!
  - Gerrymandering:

# Evaluating the Health of American Legislative Democracy

- Controversial Indicators of Democracy (important otherwise)
  - Ideological polarization: Now: Too much! 1950s: Too little!
  - Partisan alignment: Now: too much! 1980s: too little!
  - Incumbency advantage: 1980s: too much! Now: shh!
  - Vanishing marginals: 1970s: too much! 1980s: nope!
  - Gerrymandering: 200+ years: too much!

# Evaluating the Health of American Legislative Democracy

- Controversial Indicators of Democracy (important otherwise)
  - Ideological polarization: Now: Too much! 1950s: Too little!
  - Partisan alignment: Now: too much! 1980s: too little!
  - Incumbency advantage: 1980s: too much! Now: shh!
  - Vanishing marginals: 1970s: too much! 1980s: nope!
  - Gerrymandering: 200+ years: too much! SCOTUS: it's ok

# Evaluating the Health of American Legislative Democracy

- Controversial Indicators of Democracy (important otherwise)
  - Ideological polarization: Now: Too much! 1950s: Too little!
  - Partisan alignment: Now: too much! 1980s: too little!
  - Incumbency advantage: 1980s: too much! Now: shh!
  - Vanishing marginals: 1970s: too much! 1980s: nope!
  - Gerrymandering: 200+ years: too much! SCOTUS: it's ok
- Uncontroversial Indicator: Electoral Accountability

# Evaluating the Health of American Legislative Democracy

- Controversial Indicators of Democracy (important otherwise)
  - Ideological polarization: Now: Too much! 1950s: Too little!
  - Partisan alignment: Now: too much! 1980s: too little!
  - Incumbency advantage: 1980s: too much! Now: shh!
  - Vanishing marginals: 1970s: too much! 1980s: nope!
  - Gerrymandering: 200+ years: too much! SCOTUS: it's ok
- Uncontroversial Indicator: Electoral Accountability
  - Definition: meaningful threat of electoral defeat

# Evaluating the Health of American Legislative Democracy

- Controversial Indicators of Democracy (important otherwise)
  - Ideological polarization: Now: Too much! 1950s: Too little!
  - Partisan alignment: Now: too much! 1980s: too little!
  - Incumbency advantage: 1980s: too much! Now: shh!
  - Vanishing marginals: 1970s: too much! 1980s: nope!
  - Gerrymandering: 200+ years: too much! SCOTUS: it's ok
- Uncontroversial Indicator: Electoral Accountability
  - Definition: meaningful threat of electoral defeat
  - Formalization: Prob(Incumbent Defeat)

# Evaluating the Health of American Legislative Democracy

- Controversial Indicators of Democracy (important otherwise)
  - Ideological polarization: Now: Too much! 1950s: Too little!
  - Partisan alignment: Now: too much! 1980s: too little!
  - Incumbency advantage: 1980s: too much! Now: shh!
  - Vanishing marginals: 1970s: too much! 1980s: nope!
  - Gerrymandering: 200+ years: too much! SCOTUS: it's ok
- Uncontroversial Indicator: Electoral Accountability
  - Definition: meaningful threat of electoral defeat
  - Formalization: Prob(Incumbent Defeat)
  - Voters, not political scientists, define the important issues

# Evaluating the Health of American Legislative Democracy

- Controversial Indicators of Democracy (important otherwise)
  - Ideological polarization: Now: Too much! 1950s: Too little!
  - Partisan alignment: Now: too much! 1980s: too little!
  - Incumbency advantage: 1980s: too much! Now: shh!
  - Vanishing marginals: 1970s: too much! 1980s: nope!
  - Gerrymandering: 200+ years: too much! SCOTUS: it's ok
- Uncontroversial Indicator: Electoral Accountability
  - Definition: meaningful threat of electoral defeat
  - Formalization: Prob(Incumbent Defeat)
  - Voters, not political scientists, define the important issues
  - Rarely measured directly, never at scale



# Evaluating the Health of American Legislative Democracy

- Controversial Indicators of Democracy (important otherwise)
  - Ideological polarization: Now: Too much! 1950s: Too little!
  - Partisan alignment: Now: too much! 1980s: too little!
  - Incumbency advantage: 1980s: too much! Now: shh!
  - Vanishing marginals: 1970s: too much! 1980s: nope!
  - Gerrymandering: 200+ years: too much! SCOTUS: it's ok
- Uncontroversial Indicator: Electoral Accountability
  - Definition: meaningful threat of electoral defeat
  - Formalization: Prob(Incumbent Defeat)
  - Voters, not political scientists, define the important issues
  - Rarely measured directly, never at scale
- We find

# Evaluating the Health of American Legislative Democracy

- Controversial Indicators of Democracy (important otherwise)
  - Ideological polarization: Now: Too much! 1950s: Too little!
  - Partisan alignment: Now: too much! 1980s: too little!
  - Incumbency advantage: 1980s: too much! Now: shh!
  - Vanishing marginals: 1970s: too much! 1980s: nope!
  - Gerrymandering: 200+ years: too much! SCOTUS: it's ok
- Uncontroversial Indicator: Electoral Accountability
  - Definition: meaningful threat of electoral defeat
  - Formalization: Prob(Incumbent Defeat)
  - Voters, not political scientists, define the important issues
  - Rarely measured directly, never at scale
- We find
  - Prob(Defeat) high & constant over > 2/3rds century

# Evaluating the Health of American Legislative Democracy

- Controversial Indicators of Democracy (important otherwise)
  - Ideological polarization: Now: Too much! 1950s: Too little!
  - Partisan alignment: Now: too much! 1980s: too little!
  - Incumbency advantage: 1980s: too much! Now: shh!
  - Vanishing marginals: 1970s: too much! 1980s: nope!
  - Gerrymandering: 200+ years: too much! SCOTUS: it's ok
- Uncontroversial Indicator: Electoral Accountability
  - Definition: meaningful threat of electoral defeat
  - Formalization: Prob(Incumbent Defeat)
  - Voters, not political scientists, define the important issues
  - Rarely measured directly, never at scale
- We find
  - Prob(Defeat) high & constant over > 2/3rds century
  - This part of American democracy actually seems to work

# Evaluating the Health of American Legislative Democracy

- Controversial Indicators of Democracy (important otherwise)
  - Ideological polarization: Now: Too much! 1950s: Too little!
  - Partisan alignment: Now: too much! 1980s: too little!
  - Incumbency advantage: 1980s: too much! Now: shh!
  - Vanishing marginals: 1970s: too much! 1980s: nope!
  - Gerrymandering: 200+ years: too much! SCOTUS: it's ok
- Uncontroversial Indicator: Electoral Accountability
  - Definition: meaningful threat of electoral defeat
  - Formalization: Prob(Incumbent Defeat)
  - Voters, not political scientists, define the important issues
  - Rarely measured directly, never at scale
- We find
  - Prob(Defeat) high & constant over > 2/3rds century
  - This part of American democracy actually seems to work
- But Wait! Why then do the indicators change so much?

# Evaluating the Health of American Legislative Democracy

- Controversial Indicators of Democracy (important otherwise)
  - Ideological polarization: Now: Too much! 1950s: Too little!
  - Partisan alignment: Now: too much! 1980s: too little!
  - Incumbency advantage: 1980s: too much! Now: shh!
  - Vanishing marginals: 1970s: too much! 1980s: nope!
  - Gerrymandering: 200+ years: too much! SCOTUS: it's ok
- Uncontroversial Indicator: Electoral Accountability
  - Definition: meaningful threat of electoral defeat
  - Formalization: Prob(Incumbent Defeat)
  - Voters, not political scientists, define the important issues
  - Rarely measured directly, never at scale
- We find
  - Prob(Defeat) high & constant over > 2/3rds century
  - This part of American democracy actually seems to work
- But Wait! Why then do the indicators change so much?
  - E.g., Incumbency Advantage  $\in [2, 12]$  percentage points?

# Evaluating the Health of American Legislative Democracy

- Controversial Indicators of Democracy (important otherwise)
  - Ideological polarization: Now: Too much! 1950s: Too little!
  - Partisan alignment: Now: too much! 1980s: too little!
  - Incumbency advantage: 1980s: too much! Now: shh!
  - Vanishing marginals: 1970s: too much! 1980s: nope!
  - Gerrymandering: 200+ years: too much! SCOTUS: it's ok
- Uncontroversial Indicator: Electoral Accountability
  - Definition: meaningful threat of electoral defeat
  - Formalization: Prob(Incumbent Defeat)
  - Voters, not political scientists, define the important issues
  - Rarely measured directly, never at scale
- We find
  - Prob(Defeat) high & constant over > 2/3rds century
  - This part of American democracy actually seems to work
- But Wait! Why then do the indicators change so much?
  - E.g., Incumbency Advantage  $\in [2, 12]$  percentage points?
  - Prior research: averages;

# Evaluating the Health of American Legislative Democracy

- Controversial Indicators of Democracy (important otherwise)
  - Ideological polarization: Now: Too much! 1950s: Too little!
  - Partisan alignment: Now: too much! 1980s: too little!
  - Incumbency advantage: 1980s: too much! Now: shh!
  - Vanishing marginals: 1970s: too much! 1980s: nope!
  - Gerrymandering: 200+ years: too much! SCOTUS: it's ok
- Uncontroversial Indicator: Electoral Accountability
  - Definition: meaningful threat of electoral defeat
  - Formalization: Prob(Incumbent Defeat)
  - Voters, not political scientists, define the important issues
  - Rarely measured directly, never at scale
- We find
  - Prob(Defeat) high & constant over > 2/3rds century
  - This part of American democracy actually seems to work
- But Wait! Why then do the indicators change so much?
  - E.g., Incumbency Advantage  $\in [2, 12]$  percentage points?
  - Prior research: averages; Ours: full distribution

# Evaluating the Health of American Legislative Democracy

- Controversial Indicators of Democracy (important otherwise)
  - Ideological polarization: Now: Too much! 1950s: Too little!
  - Partisan alignment: Now: too much! 1980s: too little!
  - Incumbency advantage: 1980s: too much! Now: shh!
  - Vanishing marginals: 1970s: too much! 1980s: nope!
  - Gerrymandering: 200+ years: too much! SCOTUS: it's ok
- Uncontroversial Indicator: Electoral Accountability
  - Definition: meaningful threat of electoral defeat
  - Formalization: Prob(Incumbent Defeat)
  - Voters, not political scientists, define the important issues
  - Rarely measured directly, never at scale
- We find
  - Prob(Defeat) high & constant over > 2/3rds century
  - This part of American democracy actually seems to work
- But Wait! Why then do the indicators change so much?
  - E.g., Incumbency Advantage  $\in [2, 12]$  percentage points?
  - Prior research: averages; Ours: full distribution
  - Different combos of {Polarization, Partisanship, IncAd, Marginals, Gerrymandering bias}  $\leadsto$  the same Prob(Defeat)



# Goal: DGP, not merely Causal Effects

# Goal: DGP, not merely Causal Effects

- Causality

# Goal: DGP, not merely Causal Effects

- Causality
- Beyond Causality: The DGP

# Goal: DGP, not merely Causal Effects

- Causality
- Beyond Causality: The DGP
- Estimating the DGP

# Goal: DGP, not merely Causal Effects

- Causality
  - More progress recently than in 2000 years
- Beyond Causality: The DGP
- Estimating the DGP

# Goal: DGP, not merely Causal Effects

- Causality
  - More progress recently than in 2000 years
  - Quantity of Interest:  $Y(1) - Y(0)$  (specific, narrow)
- Beyond Causality: The DGP
- Estimating the DGP

# Goal: DGP, not merely Causal Effects

- Causality
  - More progress recently than in 2000 years
  - Quantity of Interest:  $Y(1) - Y(0)$  (specific, narrow)
  - Knowledge of all causal effects:
- Beyond Causality: The DGP
- Estimating the DGP

# Goal: DGP, not merely Causal Effects

- Causality
  - More progress recently than in 2000 years
  - Quantity of Interest:  $Y(1) - Y(0)$  (specific, narrow)
  - Knowledge of all causal effects: insufficient
- Beyond Causality: The DGP
- Estimating the DGP



# Goal: DGP, not merely Causal Effects

- Causality
  - More progress recently than in 2000 years
  - Quantity of Interest:  $Y(1) - Y(0)$  (specific, narrow)
  - Knowledge of all causal effects: insufficient
- Beyond Causality: The DGP
  - Description:
- Estimating the DGP

# Goal: DGP, not merely Causal Effects

- Causality
  - More progress recently than in 2000 years
  - Quantity of Interest:  $Y(1) - Y(0)$  (specific, narrow)
  - Knowledge of all causal effects: insufficient
- Beyond Causality: The DGP
  - Description: Anything goes?
- Estimating the DGP

# Goal: DGP, not merely Causal Effects

- Causality
  - More progress recently than in 2000 years
  - Quantity of Interest:  $Y(1) - Y(0)$  (specific, narrow)
  - Knowledge of all causal effects: insufficient
- Beyond Causality: The DGP
  - Description: ~~Anything goes?~~
- Estimating the DGP

# Goal: DGP, not merely Causal Effects

- Causality
  - More progress recently than in 2000 years
  - Quantity of Interest:  $Y(1) - Y(0)$  (specific, narrow)
  - Knowledge of all causal effects: insufficient
- Beyond Causality: The DGP
  - Description: ~~Anything goes?~~ Must be generatively accurate
- Estimating the DGP

# Goal: DGP, not merely Causal Effects

- Causality
  - More progress recently than in 2000 years
  - Quantity of Interest:  $Y(1) - Y(0)$  (specific, narrow)
  - Knowledge of all causal effects: insufficient
- Beyond Causality: The DGP
  - Description: ~~Anything goes?~~ Must be generatively accurate
  - Explanation:
- Estimating the DGP

# Goal: DGP, not merely Causal Effects

- Causality
  - More progress recently than in 2000 years
  - Quantity of Interest:  $Y(1) - Y(0)$  (specific, narrow)
  - Knowledge of all causal effects: insufficient
- Beyond Causality: The DGP
  - Description: ~~Anything goes?~~ Must be generatively accurate
  - Explanation: *Why* did it happen?
- Estimating the DGP

# Goal: DGP, not merely Causal Effects

- Causality
  - More progress recently than in 2000 years
  - Quantity of Interest:  $Y(1) - Y(0)$  (specific, narrow)
  - Knowledge of all causal effects: insufficient
- Beyond Causality: The DGP
  - Description: ~~Anything goes?~~ Must be generatively accurate
  - Explanation: *Why* did it happen? *Who* did it?
- Estimating the DGP

# Goal: DGP, not merely Causal Effects

- Causality
  - More progress recently than in 2000 years
  - Quantity of Interest:  $Y(1) - Y(0)$  (specific, narrow)
  - Knowledge of all causal effects: insufficient
- Beyond Causality: The DGP
  - Description: ~~Anything goes?~~ Must be generatively accurate
  - Explanation: Why did it happen? Who did it?
  - “Causes of Effects” rather than “Effects of Causes”
- Estimating the DGP



# Goal: DGP, not merely Causal Effects

- Causality
  - More progress recently than in 2000 years
  - Quantity of Interest:  $Y(1) - Y(0)$  (specific, narrow)
  - Knowledge of all causal effects: insufficient
- Beyond Causality: The DGP
  - Description: ~~Anything goes?~~ Must be generatively accurate
  - Explanation: ~~Why~~ did it happen? ~~Who~~ did it?
  - “Causes of Effects” rather than “Effects of Causes”
  - Our purpose: The big picture for Prob(defeat) & lots more
- Estimating the DGP

# Goal: DGP, not merely Causal Effects

- Causality
  - More progress recently than in 2000 years
  - Quantity of Interest:  $Y(1) - Y(0)$  (specific, narrow)
  - Knowledge of all causal effects: insufficient
- Beyond Causality: The DGP
  - Description: ~~Anything goes?~~ Must be generatively accurate
  - Explanation: Why did it happen? Who did it?
  - “Causes of Effects” rather than “Effects of Causes”
  - Our purpose: The big picture for Prob(defeat) & lots more
- Estimating the DGP
  - Build: a generative model

# Goal: DGP, not merely Causal Effects

- Causality
  - More progress recently than in 2000 years
  - Quantity of Interest:  $Y(1) - Y(0)$  (specific, narrow)
  - Knowledge of all causal effects: insufficient
- Beyond Causality: The DGP
  - Description: ~~Anything goes?~~ Must be generatively accurate
  - Explanation: Why did it happen? Who did it?
  - “Causes of Effects” rather than “Effects of Causes”
  - Our purpose: The big picture for Prob(defeat) & lots more
- Estimating the DGP
  - Build: a generative model
  - Validate: with extensive out-of-sample forecasts

# Goal: DGP, not merely Causal Effects

- Causality
  - More progress recently than in 2000 years
  - Quantity of Interest:  $Y(1) - Y(0)$  (specific, narrow)
  - Knowledge of all causal effects: insufficient
- Beyond Causality: The DGP
  - Description: ~~Anything goes?~~ Must be generatively accurate
  - Explanation: Why did it happen? Who did it?
  - “Causes of Effects” rather than “Effects of Causes”
  - Our purpose: The big picture for Prob(defeat) & lots more
- Estimating the DGP
  - Build: a generative model
  - Validate: with extensive out-of-sample forecasts
  - Compute: descriptive summaries of all quantities

# Goal: DGP, not merely Causal Effects

- Causality
  - More progress recently than in 2000 years
  - Quantity of Interest:  $Y(1) - Y(0)$  (specific, narrow)
  - Knowledge of all causal effects: insufficient
- Beyond Causality: The DGP
  - Description: ~~Anything goes?~~ Must be generatively accurate
  - Explanation: Why did it happen? Who did it?
  - “Causes of Effects” rather than “Effects of Causes”
  - Our purpose: The big picture for Prob(defeat) & lots more
- Estimating the DGP
  - Build: a generative model
  - Validate: with extensive out-of-sample forecasts
  - Compute: descriptive summaries of all quantities
  - Interpret: to understand the big picture

# A Generative Model for District-Level Elections

# A Generative Model for District-Level Elections

- Data: 14,710 Congressional district elections, 1954–2020

# A Generative Model for District-Level Elections

- Data: 14,710 Congressional district elections, 1954–2020
- $v_{it}$ : Dem vote proportion



## A Generative Model for District-Level Elections

- Data: 14,710 Congressional district elections, 1954–2020
- $v_{it}$ : Dem vote proportion
- $X_{it}$ : lag(vote), Inc party, Inc status, uncontestedness, South

# A Generative Model for District-Level Elections

- Data: 14,710 Congressional district elections, 1954–2020
- $v_{it}$ : Dem vote proportion
- $X_{it}$ : lag(vote), Inc party, Inc status, uncontestedness, South

$$v_{it} \sim \mathcal{N}(\mu_{it}, \sigma^2) \quad \text{Regression}$$

$$\mu_{it} = X_{it} \beta_t$$

# A Generative Model for District-Level Elections

- Data: 14,710 Congressional district elections, 1954–2020
- $v_{it}$ : Dem vote proportion
- $X_{it}$ : lag(vote), Inc party, Inc status, uncontestedness, South

$$v_{it} \sim \mathcal{N}(\mu_{it}, \sigma^2) \quad \text{Gelman-King's Juggelt}$$

$$\mu_{it} = X_{it}\beta_t + \gamma_i$$

- District Uniqueness:  $\gamma_i \sim \mathcal{N}(0, \sigma_\gamma^2)$

# A Generative Model for District-Level Elections

- Data: 14,710 Congressional district elections, 1954–2020
- $v_{it}$ : Dem vote proportion
- $X_{it}$ : lag(vote), Inc party, Inc status, uncontestedness, South

$$v_{it} \sim \mathcal{N}(\mu_{it}, \sigma^2)$$

$$\mu_{it} = X_{it}\beta_t + \gamma_i + \eta_t$$

- District Uniqueness:  $\gamma_i \sim \mathcal{N}(0, \sigma_\gamma^2)$
- National Swing:  $\eta_t \sim \mathcal{N}(0, \sigma_\eta^2)$

# A Generative Model for District-Level Elections

- Data: 14,710 Congressional district elections, 1954–2020
- $v_{it}$ : Dem vote proportion
- $X_{it}$ : lag(vote), Inc party, Inc status, uncontestedness, South

$$v_{it} \sim \mathcal{N}(\mu_{it}, \sigma^2)$$

$$\mu_{it} = X_{it}\beta_t + \gamma_i + \eta_t$$

- District Uniqueness:  $\gamma_i \sim \mathcal{N}(0, \sigma_\gamma^2)$
- National Swing:  $\eta_t \sim \mathcal{N}(0, \sigma_\eta^2)$
- Coeff. Stability:  $\beta_t \sim \mathcal{N}(\bar{\beta}, \sigma_\beta^2) \rightsquigarrow$  Midterm penalty, Early exits

# A Generative Model for District-Level Elections

- Data: 14,710 Congressional district elections, 1954–2020
- $v_{it}$ : Dem vote proportion
- $X_{it}$ : lag(vote), Inc party, Inc status, uncontestedness, South

$$v_{it} \sim \text{ALT}(\mu_{it}, \sigma^2, v_t) \quad \text{LogisTiCC}$$

$$\mu_{it} = X_{it}\beta_t + \gamma_i + \eta_t$$

- District Uniqueness:  $\gamma_i \sim \mathcal{N}(0, \sigma_\gamma^2)$
- National Swing:  $\eta_t \sim \mathcal{N}(0, \sigma_\eta^2)$
- Coeff. Stability:  $\beta_t \sim \mathcal{N}(\bar{\beta}, \sigma_\beta^2) \rightsquigarrow$  Midterm penalty, Early exits
- Surprises (nonlinear, nonnormal):  $\ln[v_{it}/(1 - v_{it})] \sim t(\mu_{it}, \sigma, v_t)$

# A Generative Model for District-Level Elections

- Data: 14,710 Congressional district elections, 1954–2020
- $v_{it}$ : Dem vote proportion
- $X_{it}$ : lag(vote), Inc party, Inc status, uncontestedness, South

$$v_{it} \sim \text{ALT}(\mu_{it}, \sigma^2, v_t) \quad \text{LogisTiCC}$$

$$\mu_{it} = X_{it}\beta_t + \gamma_i + \eta_t$$

- District Uniqueness:  $\gamma_i \sim \mathcal{N}(0, \sigma_\gamma^2)$
- National Swing:  $\eta_t \sim \mathcal{N}(0, \sigma_\eta^2)$
- Coeff. Stability:  $\beta_t \sim \mathcal{N}(\bar{\beta}, \sigma_\beta^2) \rightsquigarrow$  Midterm penalty, Early exits
- Surprises (nonlinear, nonnormal):  $\ln[v_{it}/(1 - v_{it})] \sim t(\mu_{it}, \sigma, v_t)$
- Ablation studies: every component essential

# A Generative Model for District-Level Elections

- Data: 14,710 Congressional district elections, 1954–2020
- $v_{it}$ : Dem vote proportion
- $X_{it}$ : lag(vote), Inc party, Inc status, uncontestedness, South

$$v_{it} \sim \text{ALT}(\mu_{it}, \sigma^2, v_t) \quad \text{LogisTiCC}$$

$$\mu_{it} = X_{it}\beta_t + \gamma_i + \eta_t$$

- District Uniqueness:  $\gamma_i \sim \mathcal{N}(0, \sigma_\gamma^2)$
- National Swing:  $\eta_t \sim \mathcal{N}(0, \sigma_\eta^2)$
- Coeff. Stability:  $\beta_t \sim \mathcal{N}(\bar{\beta}, \sigma_\beta^2) \rightsquigarrow$  Midterm penalty, Early exits
- Surprises (nonlinear, nonnormal):  $\ln[v_{it}/(1 - v_{it})] \sim t(\mu_{it}, \sigma, v_t)$
- Ablation studies: every component essential
- Extensions: uncontested outcomes; > 2 parties



# A Generative Model for District-Level Elections

- Data: 14,710 Congressional district elections, 1954–2020
- $v_{it}$ : Dem vote proportion
- $X_{it}$ : lag(vote), Inc party, Inc status, uncontestedness, South

$$v_{it} \sim \text{ALT}(\mu_{it}, \sigma^2, v_t) \quad \text{LogisTiCC}$$

$$\mu_{it} = X_{it}\beta_t + \gamma_i + \eta_t$$

- District Uniqueness:  $\gamma_i \sim \mathcal{N}(0, \sigma_\gamma^2)$
- National Swing:  $\eta_t \sim \mathcal{N}(0, \sigma_\eta^2)$
- Coeff. Stability:  $\beta_t \sim \mathcal{N}(\bar{\beta}, \sigma_\beta^2) \rightsquigarrow$  Midterm penalty, Early exits
- Surprises (nonlinear, nonnormal):  $\ln[v_{it}/(1 - v_{it})] \sim t(\mu_{it}, \sigma, v_t)$
- Ablation studies: every component essential
- Extensions: uncontested outcomes; > 2 parties
- Computation: extensive but easy; ElectIt Software

The Plan

**Model Validation: Out-of-sample tests**

Prob(Incumbent Defeat): High, No Change

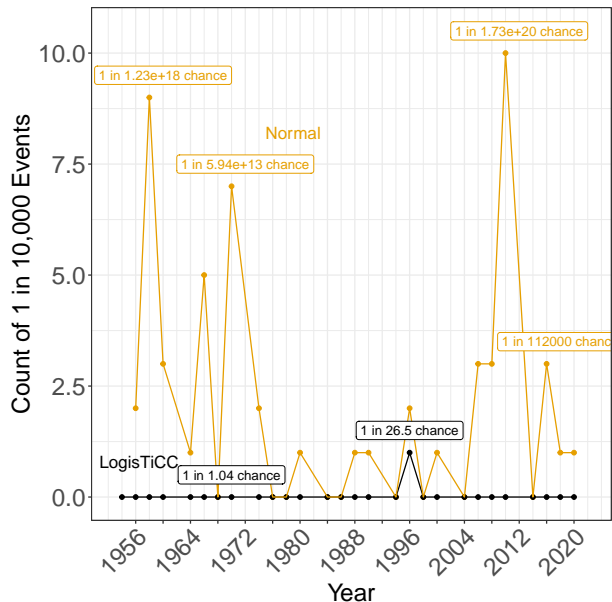
Intermediate Variables: Massive Change

How No Change Leads to Massive Change

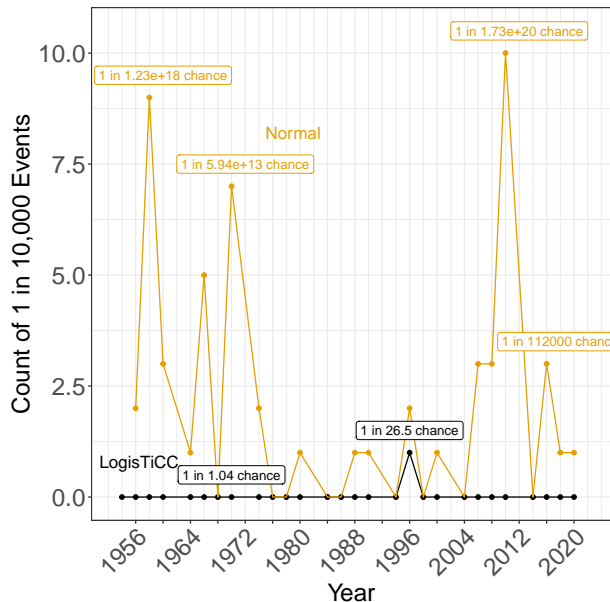
Appendix

# “Moral Certitude”: Elections outside 99.99% CI

# “Moral Certitude”: Elections outside 99.99% CI

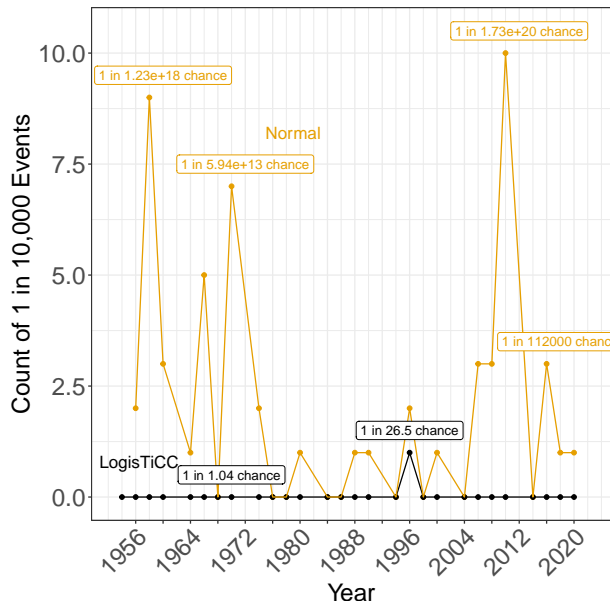


# “Moral Certitude”: Elections outside 99.99% CI



1-in-10K Events:

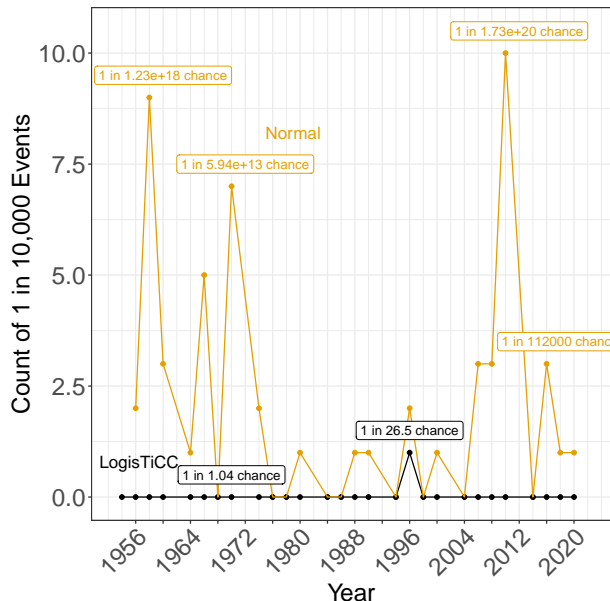
# “Moral Certitude”: Elections outside 99.99% CI



1-in-10K Events:

LogisTiCC:  
1 in 10K

# “Moral Certitude”: Elections outside 99.99% CI



1-in-10K Events:

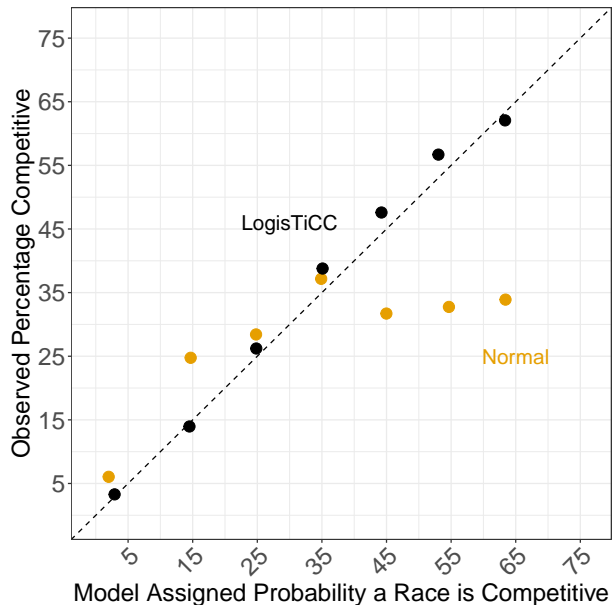
LogisTiCC:  
1 in 10K

Normal:  
All the time!

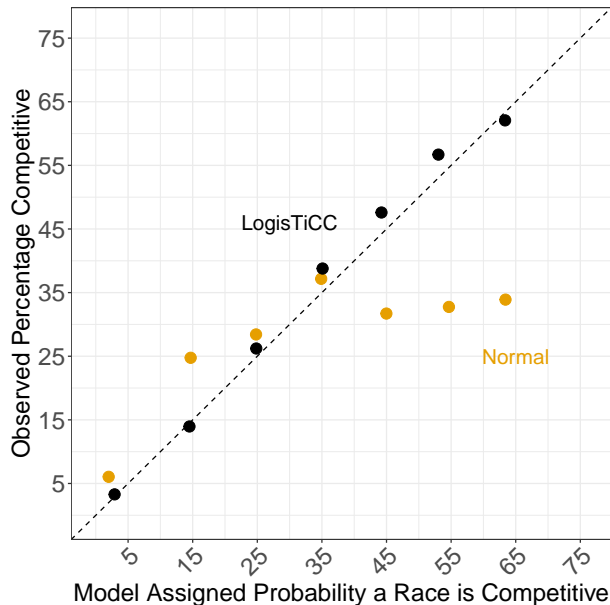
# Competitiveness Calibration



# Competitiveness Calibration

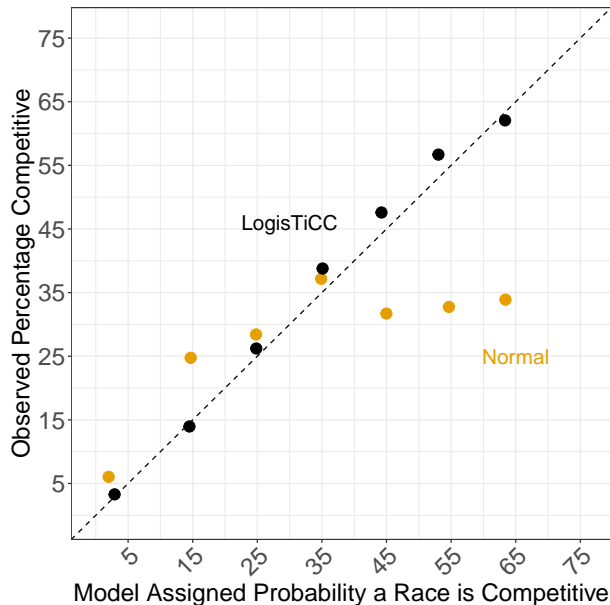


# Competitiveness Calibration



LogisTiCC: Near perfect

# Competitiveness Calibration



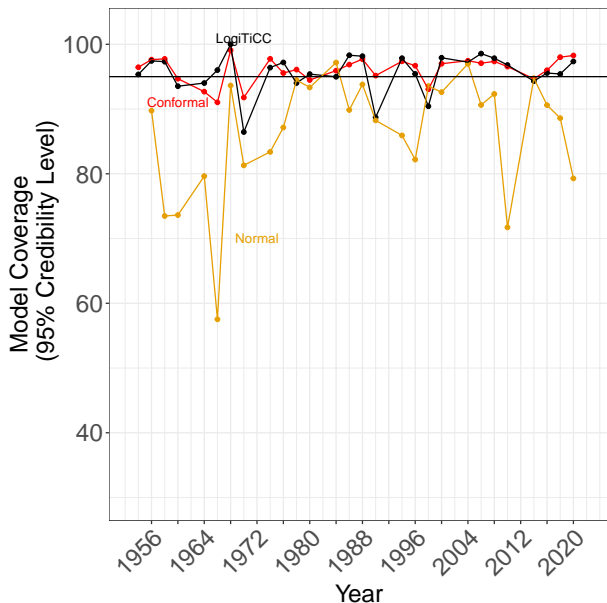
LogisTiCC: Near perfect

Normal: Fails for the most important elections

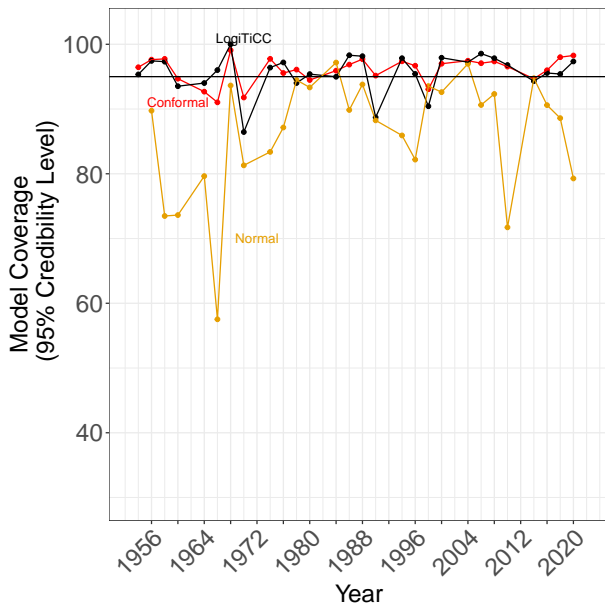
## 95% CI Coverage:

# 95% CI Coverage: District Vote

# 95% CI Coverage: District Vote

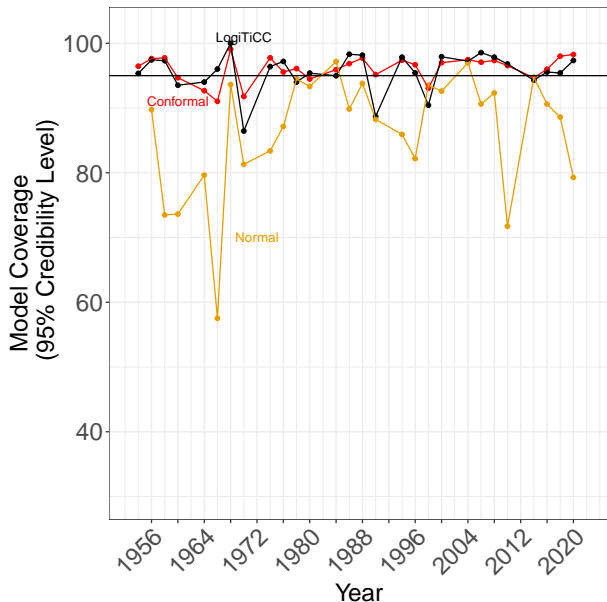


# 95% CI Coverage: District Vote



LogisTiCC:  
~ correct

## 95% CI Coverage: District Vote

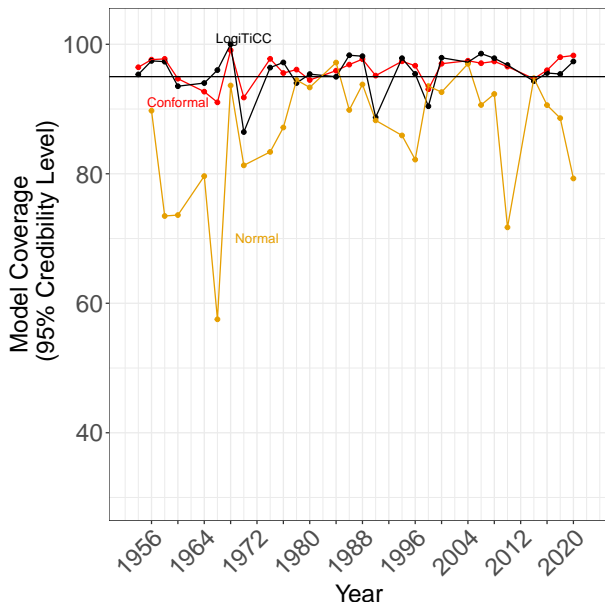


LogisTiCC:  
~ correct

Normal: Way  
over confident



# 95% CI Coverage: District Vote

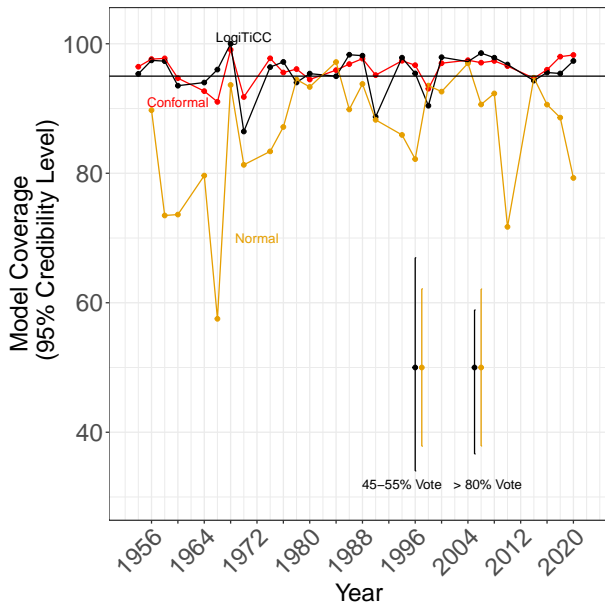


LogisTiCC:  
~ correct

Normal: Way  
over confident

Nonparametric:  
~ correct

# 95% CI Coverage: District Vote



LogitTiCC:  
~ correct

Normal: Way  
over confident

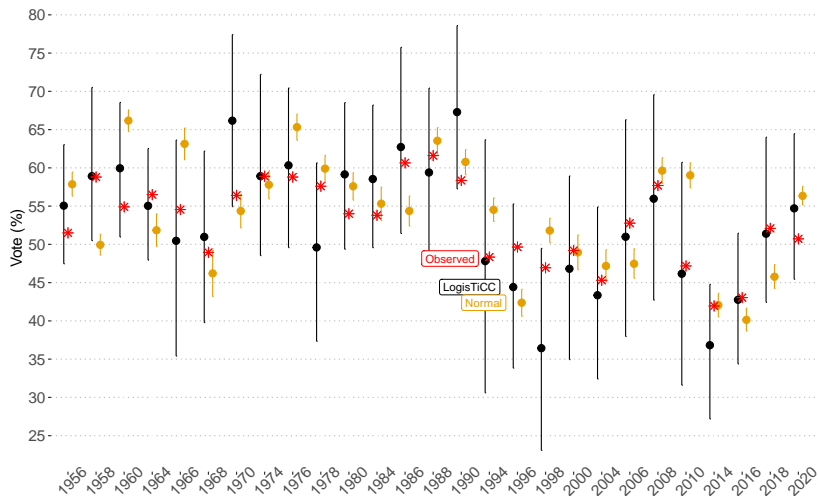
Nonparametric:  
~ correct

Average CI  
Width

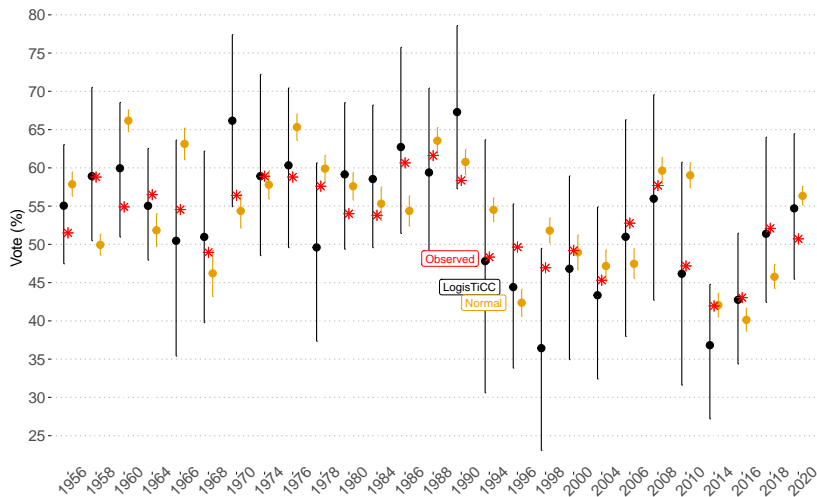
## 95% CI Coverage:

## 95% CI Coverage: Median House Seat Expected Vote

# 95% CI Coverage: Median House Seat Expected Vote

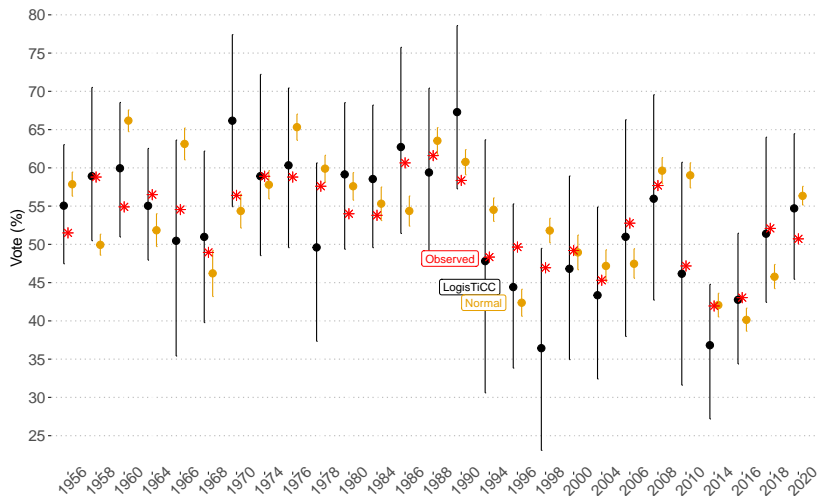


# 95% CI Coverage: Median House Seat Expected Vote



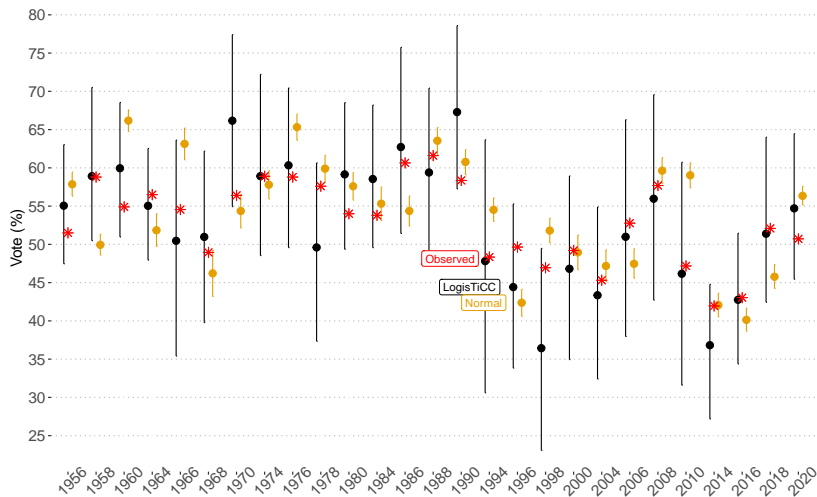
*95% CI captures*

# 95% CI Coverage: Median House Seat Expected Vote



95% CI captures (Theory: 26/27):

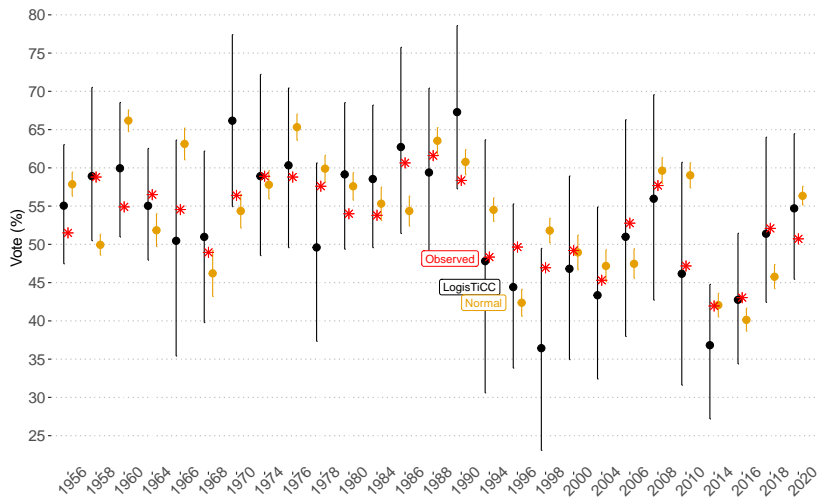
# 95% CI Coverage: Median House Seat Expected Vote



95% CI captures (Theory: 26/27): Normal 7/27,



# 95% CI Coverage: Median House Seat Expected Vote



95% CI captures (Theory: 26/27): Normal 7/27, LogisTiCC 27/27

The Plan

Model Validation: Out-of-sample tests

**Prob(Incumbent Defeat): High, No Change**

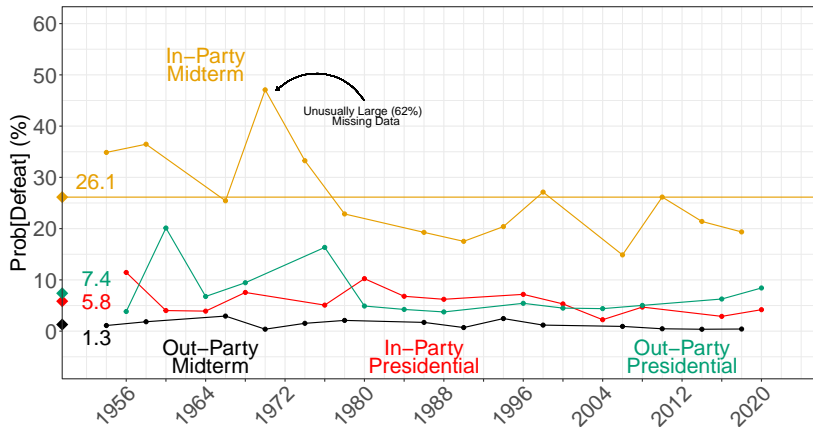
Intermediate Variables: *Massive Change*

How No Change Leads to *Massive Change*

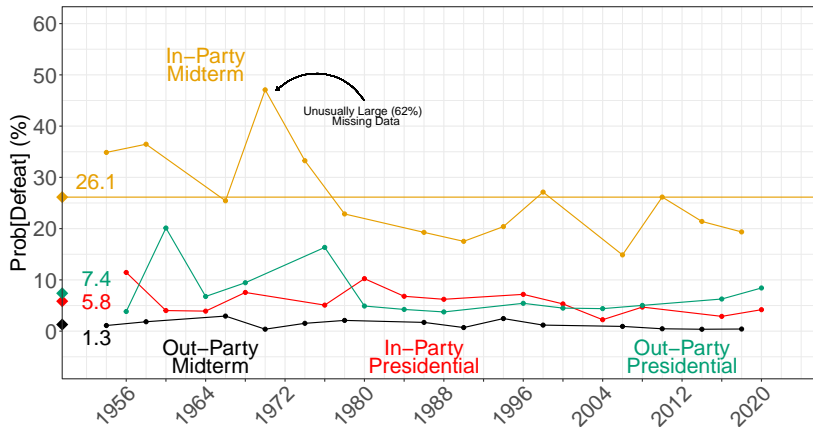
Appendix

# Prob(Defeat): High Mean, No (systematic) Change

# Prob(Defeat): High Mean, No (systematic) Change

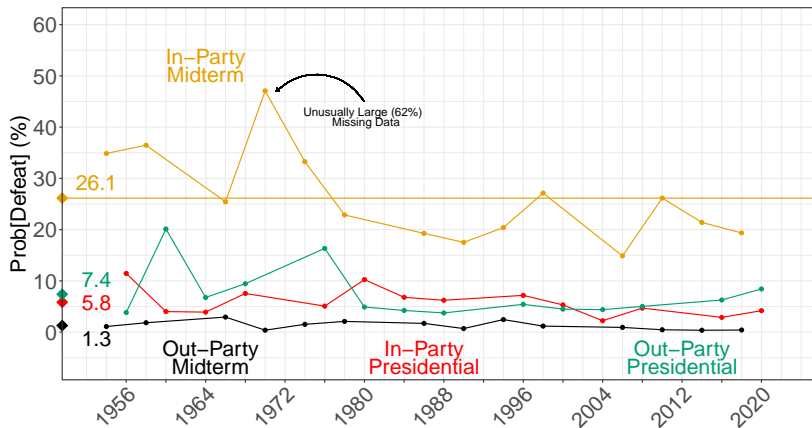


## Prob(Defeat): High Mean, No (systematic) Change



Mean high: 1.3–26.2%; overall: 11%

# Prob(Defeat): High Mean, No (systematic) Change

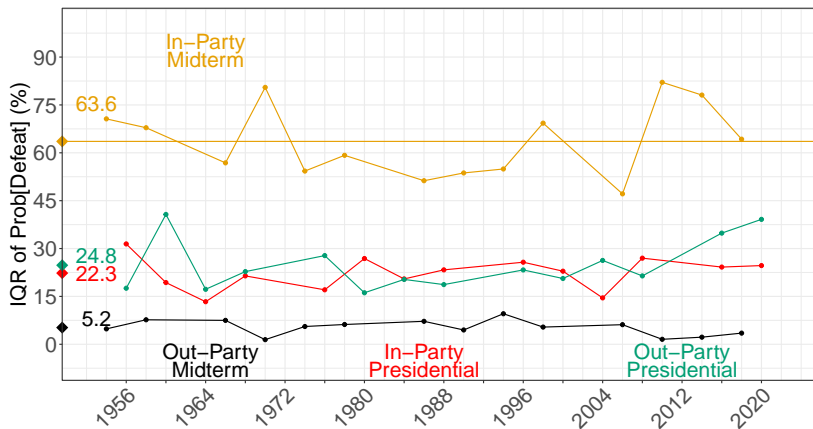


Mean high: 1.3–26.2%; overall: 11%

No Trend: Approximately constant over time

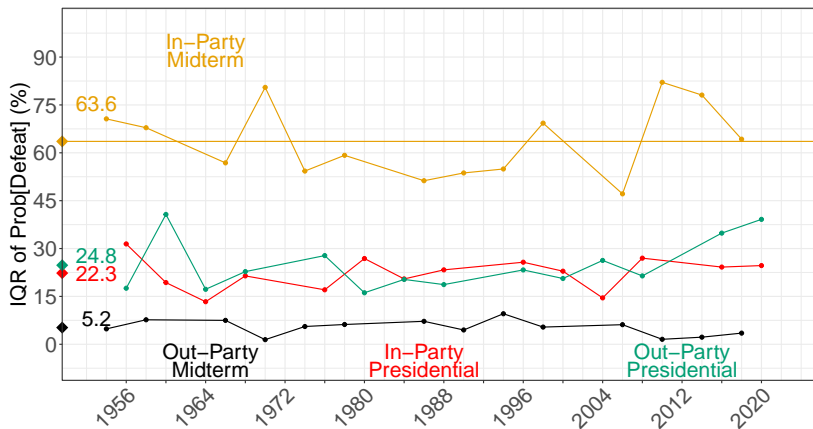
# Prob(Defeat): High Variation, No (systematic) Change

# Prob(Defeat): High Variation, No (systematic) Change



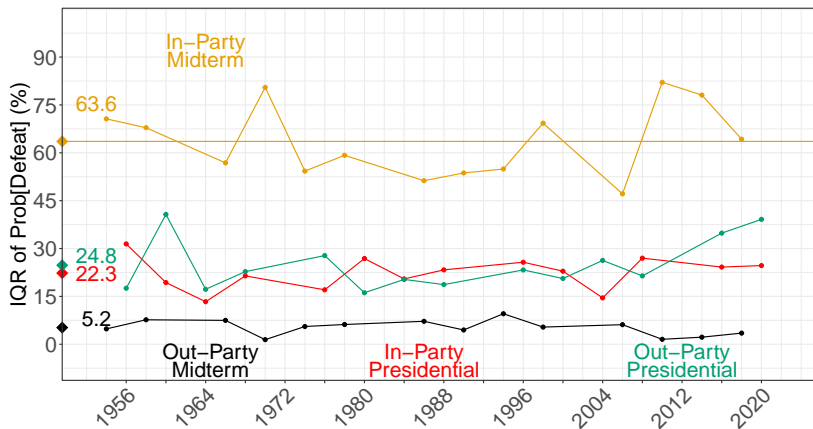


## Prob(Defeat): High Variation, No (systematic) Change



Mean high: 1.3–26.2%; overall: 11%

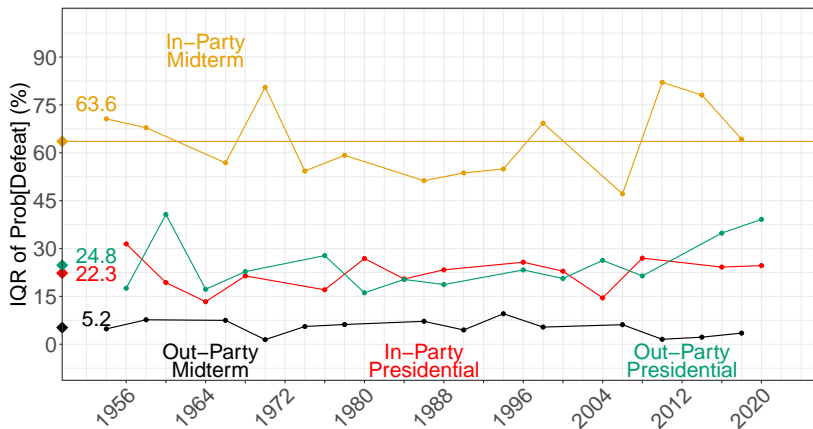
# Prob(Defeat): High Variation, No (systematic) Change



Mean high: 1.3–26.2%; overall: 11%

No Trend: Approximately constant over time

# Prob(Defeat): High Variation, No (systematic) Change

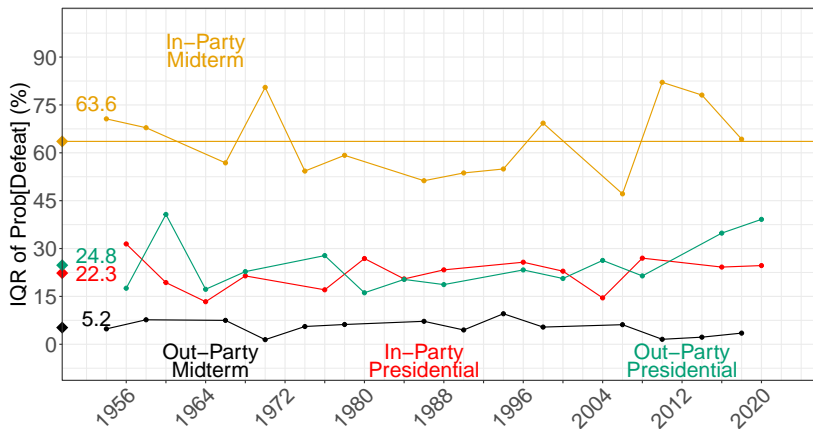


Mean high: 1.3–26.2%; overall: 11%

No Trend: Approximately constant over time

Individual job security?

# Prob(Defeat): High Variation, No (systematic) Change



Mean high: 1.3–26.2%; overall: 11%

No Trend: Approximately constant over time

Individual job security? Random terror!

The Plan

Model Validation: Out-of-sample tests

Prob(Incumbent Defeat): High, No Change

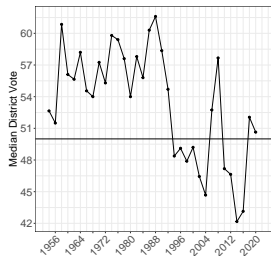
**Intermediate Variables: Massive Change**

How No Change Leads to Massive Change

Appendix

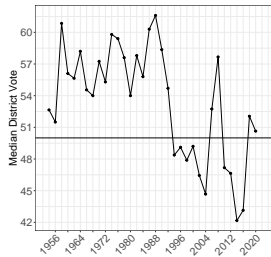
# Massive Political Change [With Prob(Defeat) constant?]

# Massive Political Change [With Prob(Defeat) constant?]

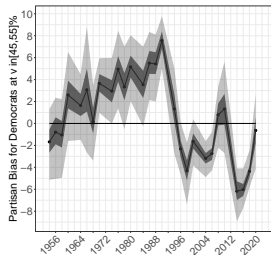


Median District Vote

# Massive Political Change [With Prob(Defeat) constant?]



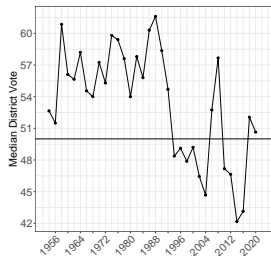
Median District Vote



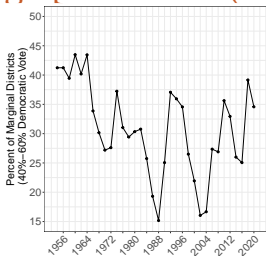
Partisan Bias



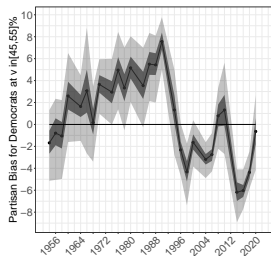
# Massive Political Change [With Prob(Defeat) constant?]



Median District Vote

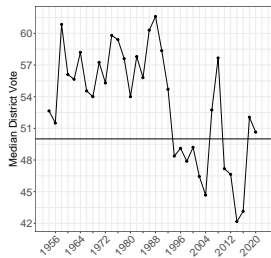


Electoral Marginals

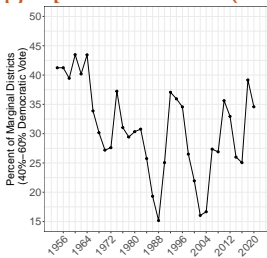


Partisan Bias

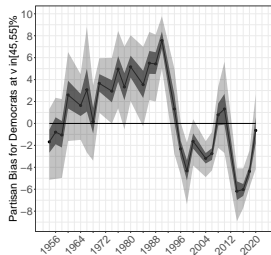
# Massive Political Change [With Prob(Defeat) constant?]



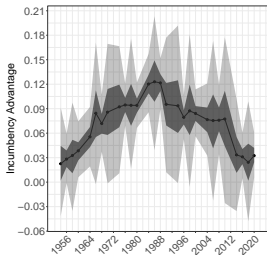
Median District Vote



Electoral Marginals

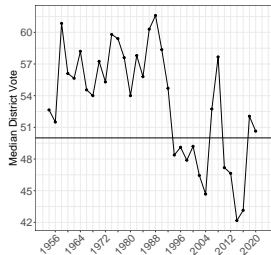


Partisan Bias

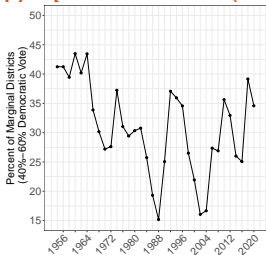


Incumbency Advantage

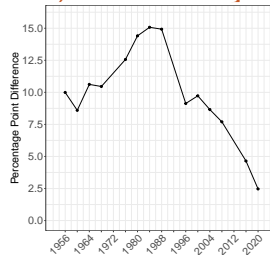
# Massive Political Change [With Prob(Defeat) constant?]



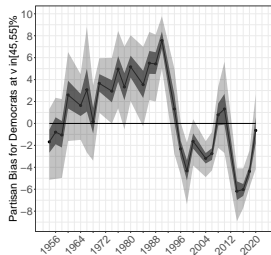
Median District Vote



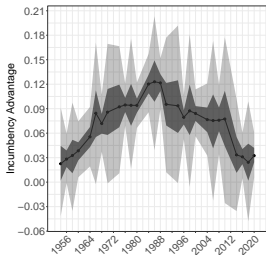
Electoral Marginals



Split Ticket Voting

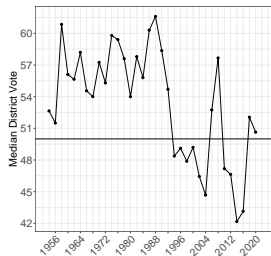


Partisan Bias

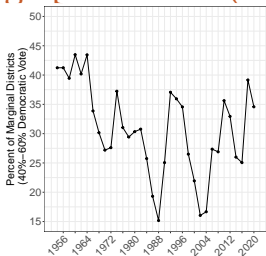


Incumbency Advantage

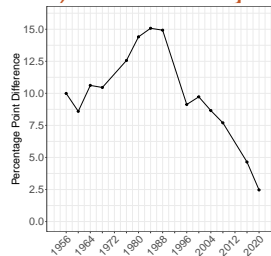
# Massive Political Change [With Prob(Defeat) constant?]



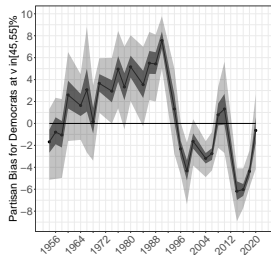
Median District Vote



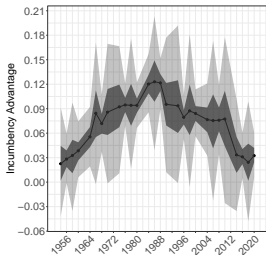
Electoral Marginals



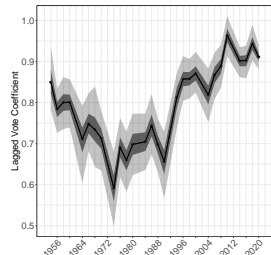
Split Ticket Voting



Partisan Bias



Incumbency Advantage



Lagged Vote

The Plan

Model Validation: Out-of-sample tests

Prob(Incumbent Defeat): High, No Change

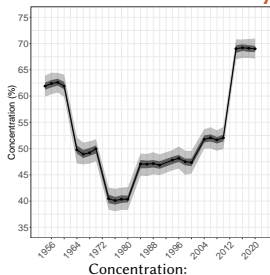
Intermediate Variables: Massive Change

How No Change Leads to Massive Change

Appendix

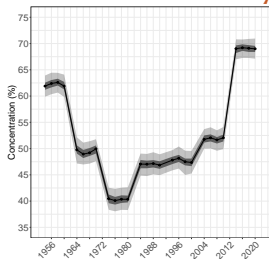
# More than Central Tendency: Variation Matters

# More than Central Tendency: Variation Matters



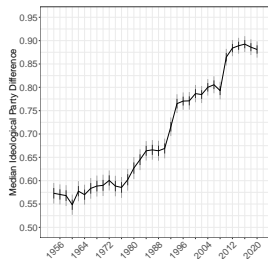
$$\int_{45}^{55} p(v|E[v] = 50)dv$$

# More than Central Tendency: Variation Matters



Concentration:

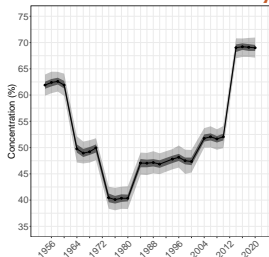
$$\int_{45}^{55} p(v|E[v] = 50)dv$$



Ideological Polarization  
(DW-NOMINATE)

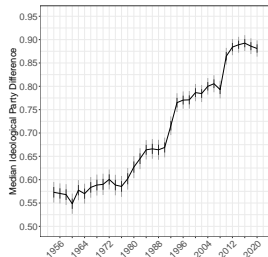


# More than Central Tendency: Variation Matters

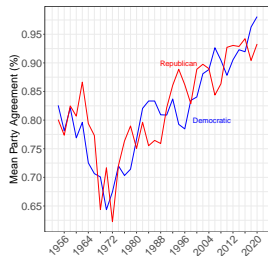


Concentration:

$$\int_{45}^{55} p(v|E[v] = 50)dv$$

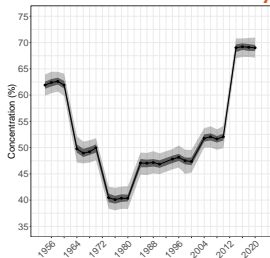


Ideological Polarization  
(DW-NOMINATE)

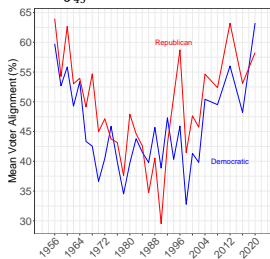
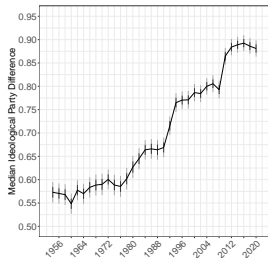


Legislator-Leader Party Agreement (Roll calls)

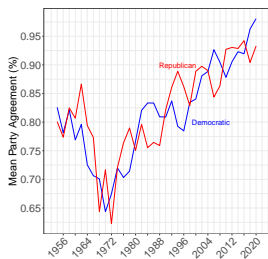
# More than Central Tendency: Variation Matters



$$\int_{45}^{55} p(v|E[v] = 50)dv$$



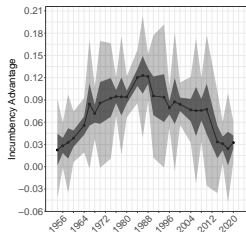
Party ID-Vote Agreement (ANES)



Legislator-Leader Party Agreement (Roll calls)

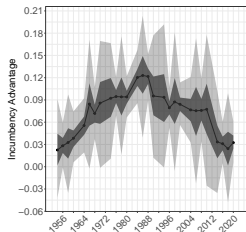
# “Adding” it up

# “Adding” it up



Incumbency  
Advantage

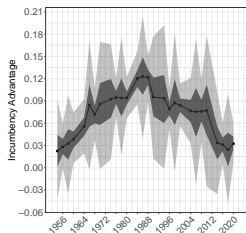
# “Adding” it up



+

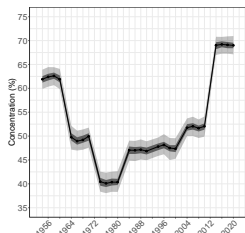
Incumbency  
Advantage

# “Adding” it up



Incumbency  
Advantage

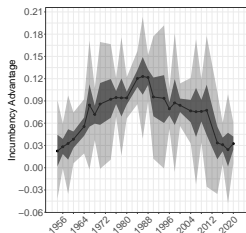
+



Concentration:

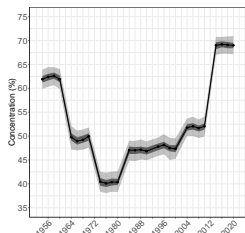
$$\int_{45}^{55} p(v|E[v] = 50)dv$$

# “Adding” it up



Incumbency  
Advantage

+

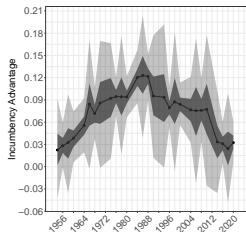


=

Concentration:

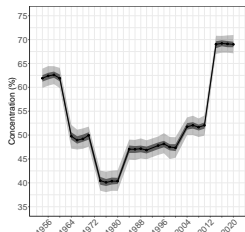
$$\int_{45}^{55} p(v|E[v] = 50)dv$$

# “Adding” it up



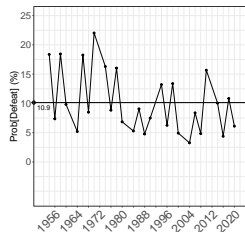
Incumbency  
Advantage

+



Concentration:  
$$\int_{45}^{55} p(v|E[v] = 50)dv$$

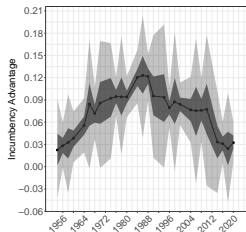
=



Mean Prob(Defeat)

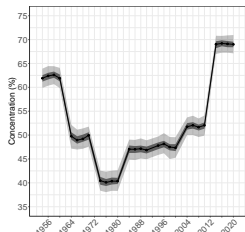


# “Adding” it up



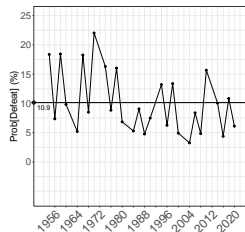
Incumbency  
Advantage

+



Concentration:  
$$\int_{45}^{55} p(v|E[v] = 50)dv$$

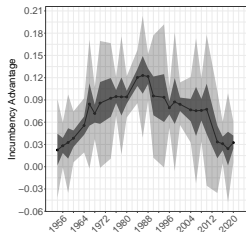
=



Mean Prob(Defeat)

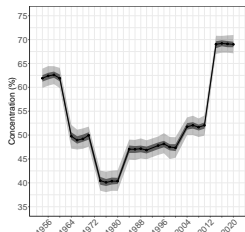
We find

# “Adding” it up



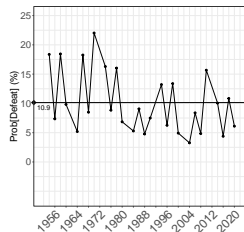
Incumbency  
Advantage

+



Concentration:  
$$\int_{45}^{55} p(v|E[v] = 50)dv$$

=

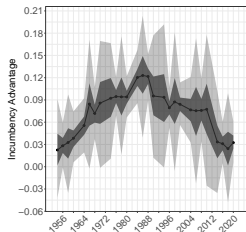


Mean Prob(Defeat)

We find

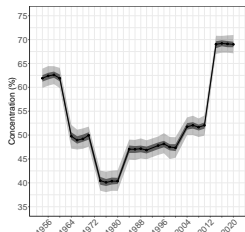
- Prob(defeat) high, constant over > 2/3rds century

# “Adding” it up



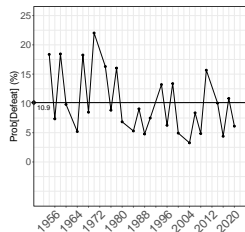
Incumbency  
Advantage

+



Concentration:  
$$\int_{45}^{55} p(v|E[v] = 50)dv$$

=

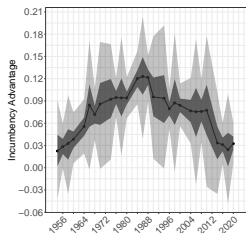


Mean Prob(Defeat)

## We find

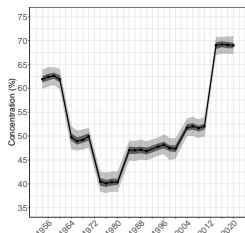
- Prob(defeat) high, constant over > 2/3rds century
- Different combos of {Polarization, Partisanship, IncAd, Marginals, Gerrymandering bias}  $\leadsto$  the same Prob(Defeat)

# “Adding” it up



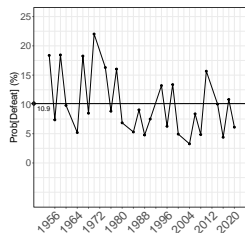
Incumbency  
Advantage

+



Concentration:  
$$\int_{45}^{55} p(v|E[v] = 50)dv$$

=



Mean Prob(Defeat)

## We find

- Prob(defeat) high, constant over > 2/3rds century
- Different combos of {Polarization, Partisanship, IncAd, Marginals, Gerrymandering bias}  $\leadsto$  the same Prob(Defeat)
- (This part of) American democracy actually seems to work

Papers, slides, software, data

GaryKing.org



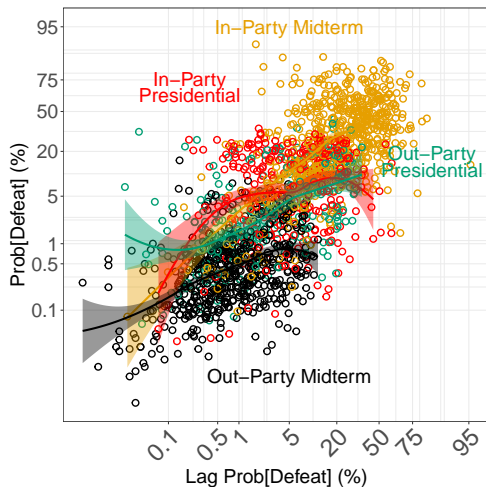


# Appendix

## Random (T)error for Incumbents

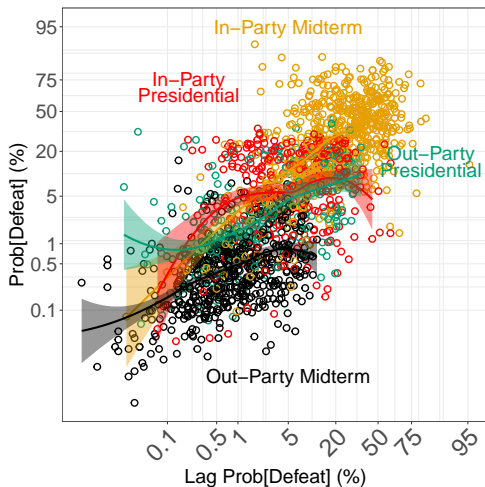


# Random (T)error for Incumbents



(Both axes on the logit scale)

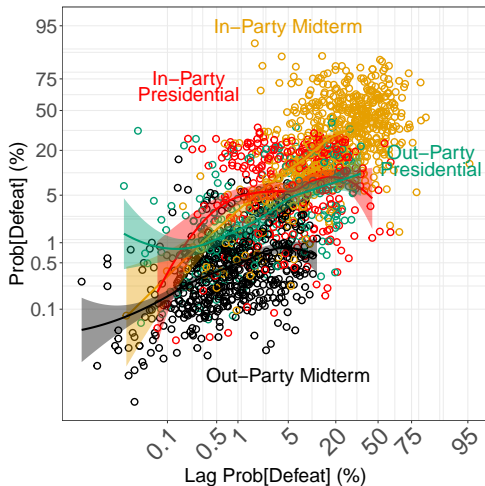
# Random (T)error for Incumbents



Prob(Defeat) varies:

(Both axes on the logit scale)

# Random (T)error for Incumbents

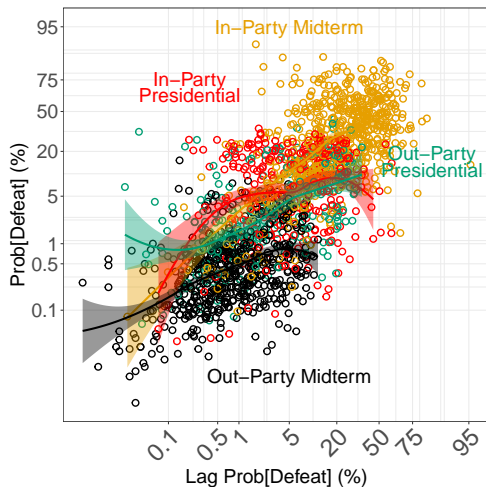


(Both axes on the logit scale)

Prob(Defeat) varies:

- by type: in/out party; presidential/midterm

# Random (T)error for Incumbents

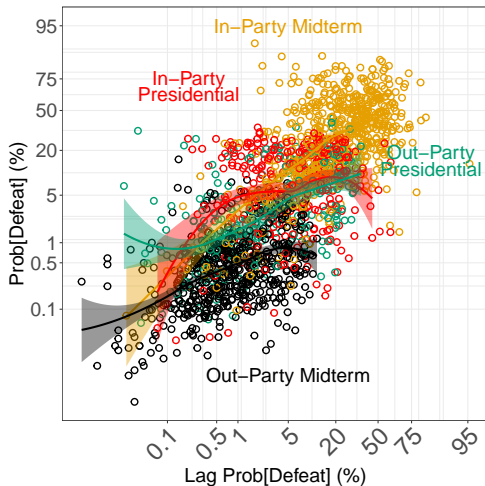


(Both axes on the logit scale)

Prob(Defeat) varies:

- **by type:** in/out party; presidential/midterm
- **by district:** few safe

# Random (T)error for Incumbents

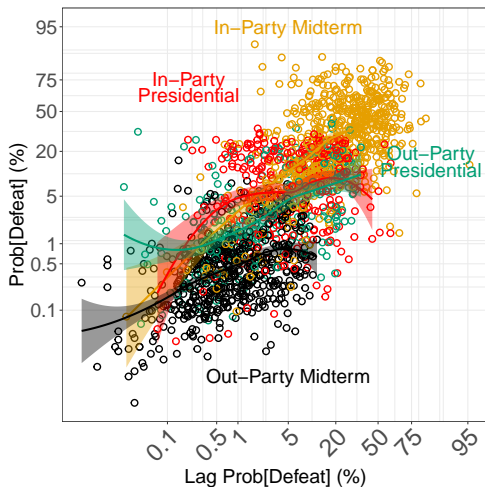


(Both axes on the logit scale)

Prob(Defeat) varies:

- by type: in/out party; presidential/midterm
- by district: few safe
- massively over time

# Random (T)error for Incumbents



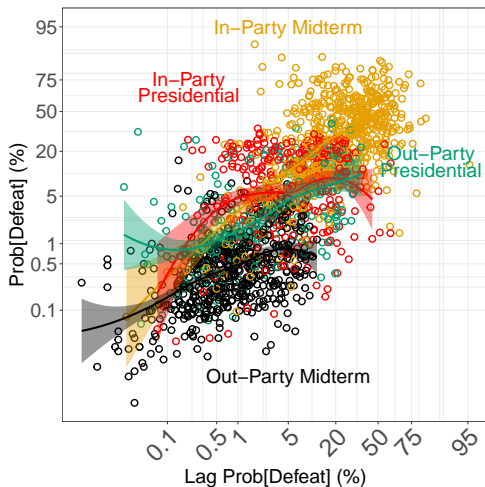
(Both axes on the logit scale)

Prob(Defeat) varies:

- by type: in/out party; presidential/midterm
- by district: few safe
- massively over time

Electoral accountability:

# Random (T)error for Incumbents



(Both axes on the logit scale)

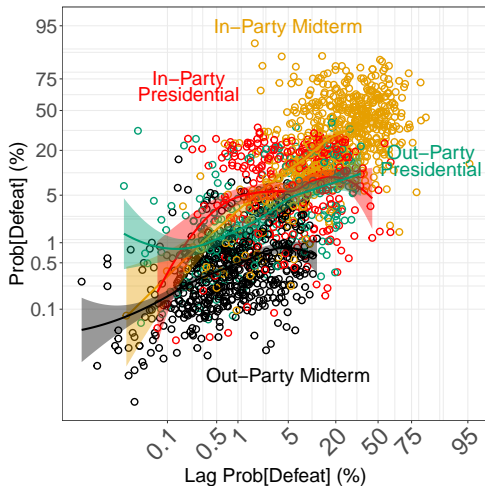
Prob(Defeat) varies:

- **by type:** in/out party; presidential/midterm
- **by district:** few safe
- **massively over time**

Electoral accountability:

- **High:**

# Random (T)error for Incumbents



(Both axes on the logit scale)

Prob(Defeat) varies:

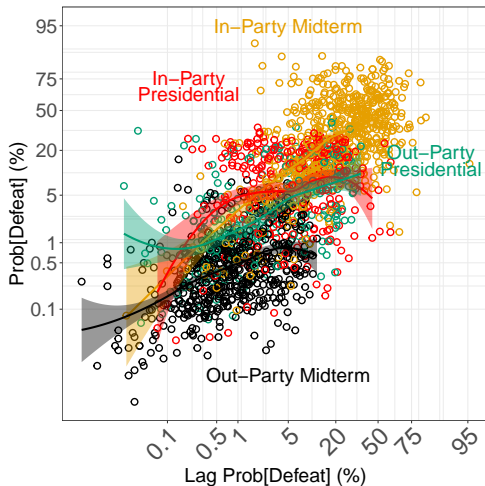
- by type: in/out party; presidential/midterm
- by district: few safe
- massively over time

Electoral accountability:

- High: 1.3–26% (11% avg.)



# Random (T)error for Incumbents



(Both axes on the logit scale)

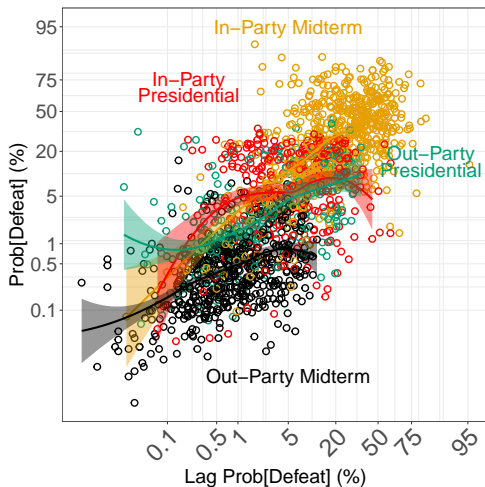
Prob(Defeat) varies:

- by type: in/out party; presidential/midterm
- by district: few safe
- massively over time

Electoral accountability:

- High: 1.3–26% (11% avg.)
- No (systematic) change:

# Random (T)error for Incumbents



(Both axes on the logit scale)

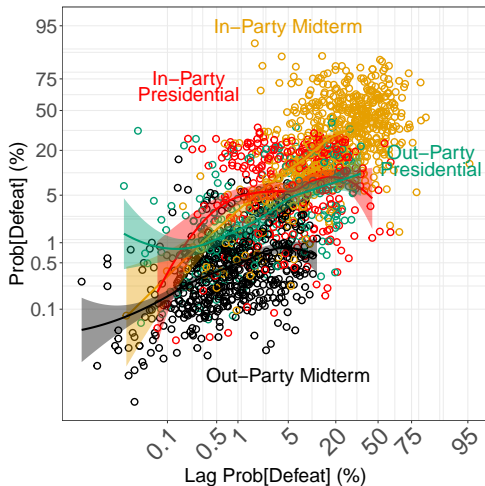
Prob(Defeat) varies:

- by type: in/out party; presidential/midterm
- by district: few safe
- massively over time

Electoral accountability:

- High: 1.3–26% (11% avg.)
- No (systematic) change: > 2/3rds of a century

# Random (T)error for Incumbents



(Both axes on the logit scale)

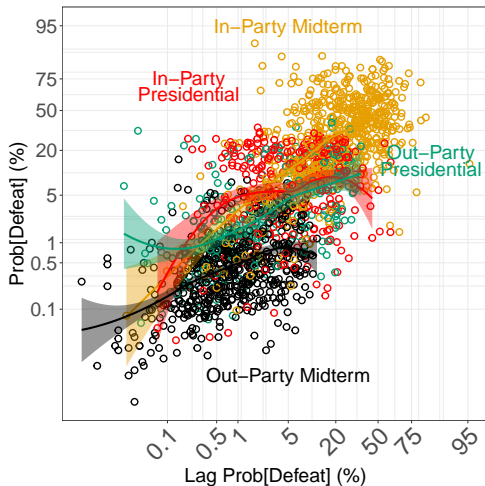
## Prob(Defeat) varies:

- by type: in/out party; presidential/midterm
- by district: few safe
- massively over time

## Electoral accountability:

- High: 1.3–26% (11% avg.)
- No (systematic) change: > 2/3rds of a century
- At risk? almost everyone

# Random (T)error for Incumbents



(Both axes on the logit scale)

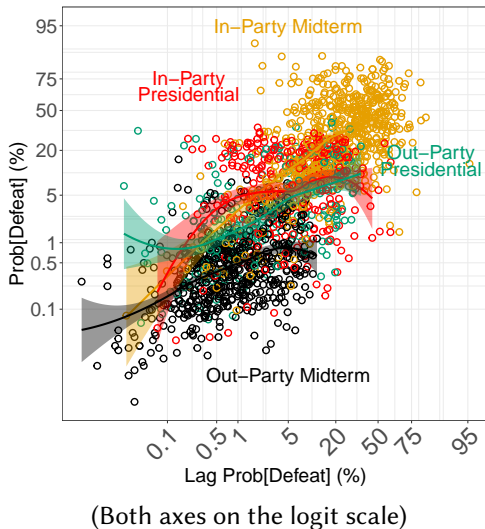
## Prob(Defeat) varies:

- by type: in/out party; presidential/midterm
- by district: few safe
- massively over time

## Electoral accountability:

- High: 1.3–26% (11% avg.)
- No (systematic) change: > 2/3rds of a century
- At risk? almost everyone
- Especially: President's party

# Random (T)error for Incumbents



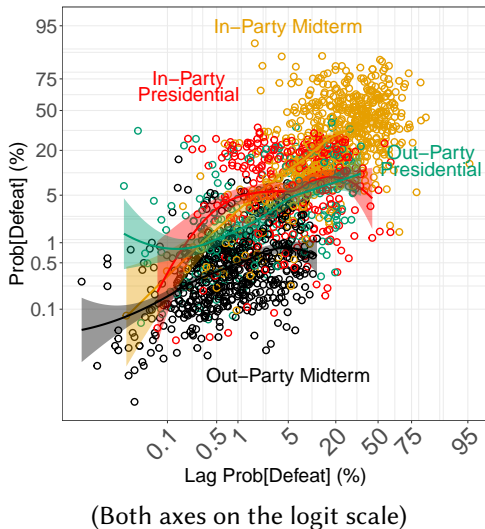
## Prob(Defeat) varies:

- by type: in/out party; presidential/midterm
- by district: few safe
- massively over time

## Electoral accountability:

- High: 1.3–26% (11% avg.)
- No (systematic) change: > 2/3rds of a century
- At risk? almost everyone
- Especially: President's party
- Job Security:

# Random (T)error for Incumbents



## Prob(Defeat) varies:

- by type: in/out party; presidential/midterm
- by district: few safe
- massively over time

## Electoral accountability:

- High: 1.3–26% (11% avg.)
- No (systematic) change: > 2/3rds of a century
- At risk? almost everyone
- Especially: President's party
- Job Security: Random terror